

EVA

EVA's Pool Experience

Residential swimming pools

Sports, fun, and wellness; get the most out of your swimming pool!



**“We want you
to enjoy your
pool all year
round.”**

The EVA Experience *AT HOME*

EVA Optic is the representative of innovative power in the world of swimming pools & home wellness. Our products offer you a fantastic pool experience at home. Not only with our indestructible underwater lights, but we also see new opportunities. New possibilities to enjoy swimming and sports even more. For example by broadening the function of your private swimming pool.

Get the most out of your pool

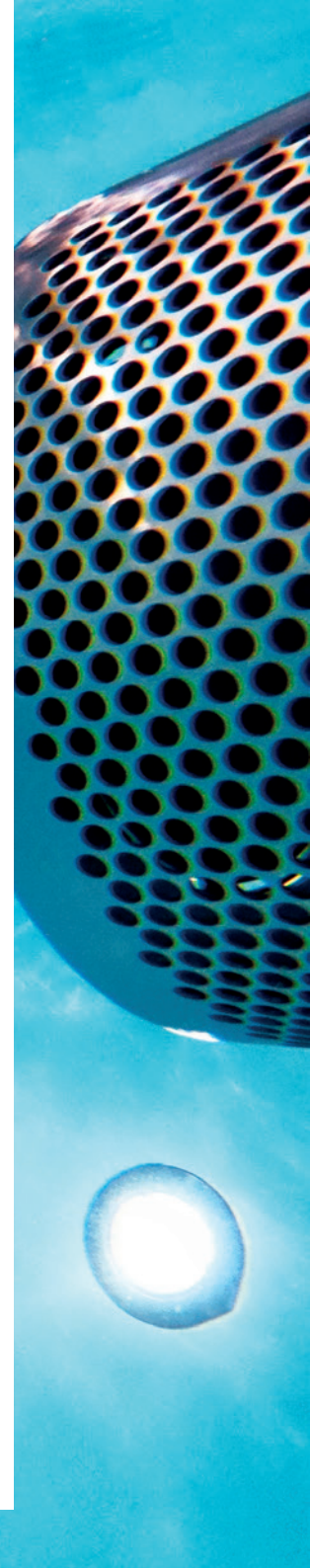
Maybe you have plans to build your own swimming pool? Or perhaps you have had a swimming pool in your garden for years. But you don't use it that much anymore, because it is actually too small to really swim. With the EVAstream swimming machine you can swim freely, even enjoy a training, in your own pool.

Create your own EVA Experience

You can now enjoy your pool all year round, not just on hot summer days! The EVAstream swimming machine turns any pool, no matter how small, into a home fitness. We developed pre-programmed swimming training sessions, in which the LED underwater lights guide and motivate you through the exercises. Control both underwater lighting and EVAstream from inside the pool with Piezo buttons. The EYeve underwater camera serves as an extra pair of eyes under water, a safe feeling. This is how you get the most out of your swimming pool!

Create your own EVA Experience

This booklet is intended for inspiration. Whether you already have a swimming pool or you are still in the orientation phase. We show what is possible, but also what you should take into account. We will help you to get the most out of your swimming pool experience!



EVAstream counter-current SWIMMING MACHINE

“Start your working day with an energetic workout or take a relaxing dive in the evening to release all the stress of a busy day.”

Meet the EVAstream. With this versatile swimming machine you can get the most out of your pool. Swim like in a public pool, but at home, in your own pool!

Swimming fun for the entire family

The EVAstream is incredibly versatile. The swimming machine transforms any swimming pool into a professional training pool, home fitness and a unique water attraction in an instant. Fantastic swimming fun for the whole family. All year round.

Standard swimming pool equipment

Not only can you enjoy swimming relaxing “laps” or follow a challenging swimming training, but aqua jogging or rehabilitation are also possible. And the children? They can fully enjoy themselves. Make rapids in the pool or place the machine on the pool floor for a fantastic underwater volcano. That is why an EVAstream is part of the standard equipment for every swimming pool.

Swimming all year round

The EVAstream makes a residential swimming pool attractive and accessible for many more people. You can now swim all year round, and really get the most out of your pool!



Healthy with the EVAstream

Swimming is healthy, very healthy even. Swimming regularly makes your whole body stronger. You train all muscle groups, strengthen your heart and lungs and improve your endurance. A real full-body workout, without injuries.

But swimming is also good for your mind. It reduces stress, improves sleep and provides energy. The silence in the water, the repetitive swimming movements, combined with the auto-synchronizing EVA multicolour underwater lighting will bring you completely into the present moment. Swimming in the EVAstream is almost meditative; relaxation through exertion!

“With the versatile EVAstream swimming machine you really get the most out of your pool.”

Safety

The EVAstream has been developed to perfection. The swimming machine meets very strict quality and safety requirements. Including the international safety standards for private swimming pools (EN 16582-1) and public swimming pools (EN 13451-1) for hair safety, among other things.



EVastream

MODELS

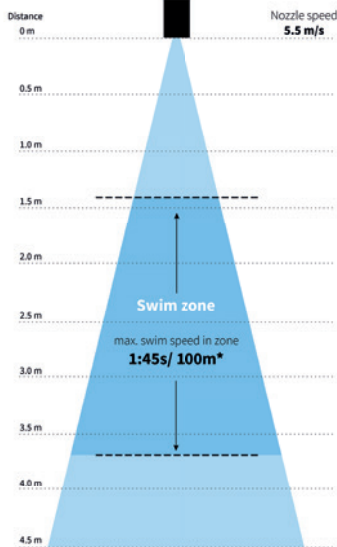
The EVastream is available in 3 models; EVastream Fit, Pro and Max. The EVastream Fit is a favourite with recreational swimmers. Experienced swimmers and athletes choose the EVastream Pro because of its extra powerful current. The EVastream Max offers the maximum swimming experience. It can be used in small swimming pools (> 4.5m long), with the most spacious swimming zone (due to the double turbine). Moreover, the EVastream Max offers even top athletes of Olympic level a challenging training. The three models are available as both surface-mounted and recessed version.

Try them out!

Which EVastream is right for you? Try out the different models in a test pool.



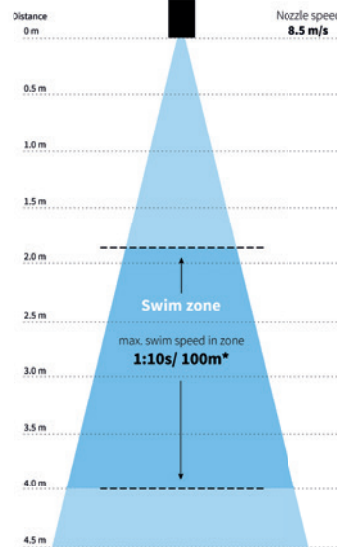
EVastream FIT
single-engine machine



*Measurements adult professional swimmer Body size and mass affect swim speed



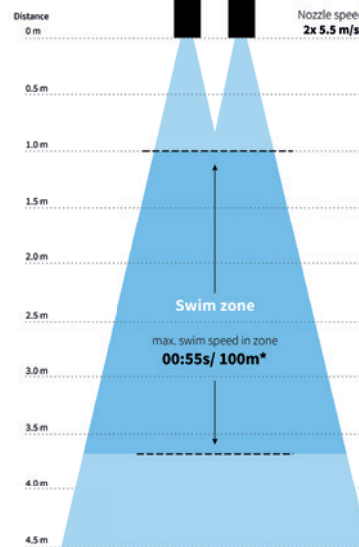
EVastream PRO
single-engine machine



*Measurements adult professional swimmer Body size and mass affect swim speed



EVastream MAX
double-engine machine



*Measurements adult professional swimmer Body size and mass affect swim speed

“Complete the experience with the preset swim workouts!”



EVastream SWIM WORKOUTS

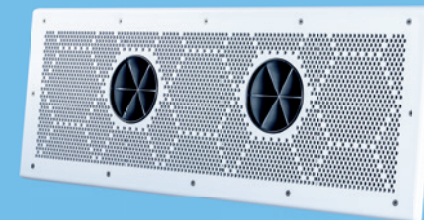
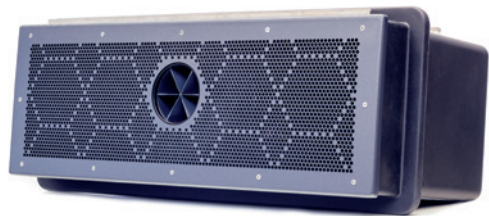
Follow the specially developed EVastream swimming workouts with a combination of sprint, interval and endurance elements. The auto-synchronizing EVA RX Smart RGBW underwater lights provide intuitive guidance during training. A truly unique swimming experience. Ready to go ...?

Control from inside the pool

Start your EVastream swimming workout at the touch of a button, right from the pool. The workouts are fully pre-programmed, with various types of swimming exercises, auto-synchronizing underwater lights and even built-in rest breaks. Adjust the swimming speed of the training to your own level and enjoy a wonderful swimming training!

Spacious swim zone

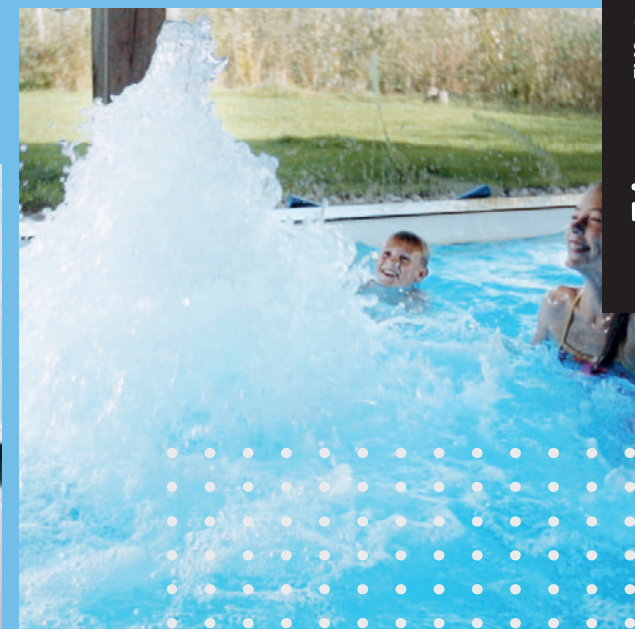
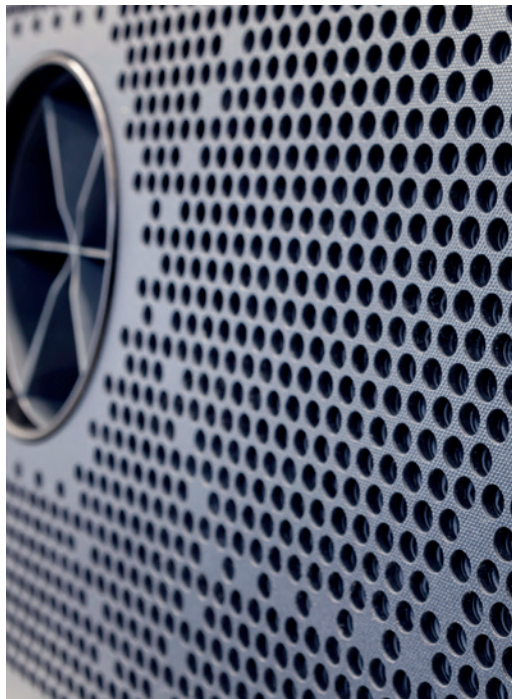
The current of the EVastream is powerful and reaches far, creating a spacious swimming zone. This means you are positioned further away from the machine and you have plenty of room to move while swimming. It gives you plenty of space to accelerate without directly hitting the side. Making for a very true to nature swimming experience.



“In the EVAstream you can do much more than just swim laps”

The EVAstream is not only great for “swimming laps” or training. Rehabilitation and therapeutic exercises, but also water aerobics and aqua jogging. Discover new aqua sports in the privacy of your own pool.

In addition to a built-in version, the EVAstream is also available as a flexible surface-mounted version. And that offers even more possibilities. Place the EVAstream in the corner of the pool to create great rapids. Create an underwater volcano, use body boards and other play materials. Enjoy your swimming pool to the fullest, with the whole family!





EVA underwater lighting

Underwater lighting enhances the allure of every swimming pool. It creates a wonderful atmosphere in and outside your pool and in the surrounding garden and terrace. With our multicoloured LED underwater lighting, you can even change the ambiance at the push of a button.

EVA Optic is a specialist in light experience

EVA LED underwater lighting was originally developed for public swimming pools and water parks. As the preferred supplier of the atmospheric Center Parcs water parks, we are experts in creating the ultimate swimming pool lighting experience.

“As the preferred supplier of Center Parcs subtropical water parks, we are experts in creating the ultimate swimming pool lighting experience.”

Professional quality in your own swimming pool

We developed the RX LED underwater lighting product range especially for residential swimming pools. With this range we now offer the same quality and durability, which used to be exclusive to the professional market, for your own swimming pool.

The RX model is based on our professional A-series and complies with the international IEC EN 60598-2-18 safety standard. Because it is highly durable and extremely safe, we offer a standard 4-year manufacturer's warranty.



EVA RX underwater light

Especially for private swimming pools, we developed the EVA R(X) series. This series consists of underwater lights for existing and newly built pools, either in a mono colour or in multicoloured RGBW.

RX Eco mono RX Smart RGBW



With underwater lighting you determine the ambiance in and around your swimming pool. For example, opt for atmospheric warm white light in your swimming pool. Or do you want to be able to completely control the colour and atmosphere of your swimming pool? Then choose RGBW lamps for a full colour metamorphosis under water.

Few lamps, a lot of light

In a private swimming pool, only 2 or 3 20W RX LED underwater lights are usually required to evenly illuminate the entire pool. How do we manage that? We use only the newest and best product components. We also apply smart technologies so that we can keep the product price low. Without compromising on quality.

Swim training with synchronizing multicoloured underwater lights

Together with the EVAstream, EVA's LED underwater lighting gets a whole new function. Connect the RX Smart RGBW underwater lights to the EVAstream swimming machine and follow the pre-programmed swim training sessions. The lighting changes colour during the training and gives you orientation and motivation as a swimmer. The light colours indicate, among other things, when the next exercise starts, how far you have progressed within an exercise and when you have a rest break.

Wellness experience with colour

Multicolor (RGBW) underwater lighting also enables colour therapy in your own pool.

Relax in green light, energize yourself in orange light, or use blue light to fall asleep better after swimming. Play with colours and intensity to create your ideal wellness experience at home.

RX Eco with fixed light colour

The RX Eco is a very powerful and energy efficient LED underwater lamp with a fixed light colour (mono color). The Eco is available in 3 single light colours; warm white (3000K), daylight white (6000K) or Mediterranean blue. With an astonishingly high light intensity and an energy consumption of only 20W per lamp. It is not without reason that this lamp bears the title "Eco".

EVA RX Smart RGBW

The RX Smart is a DMX-controlled 20W multi-coloured light for residential swimming pools. The RX Smart works via the universal DMX512 protocol. A colour spectacle composed entirely according to your wishes. And a fantastic aid for EVAstream swimming training. Available with daylight white (6500K) or warm white (3000K) LEDs.

Ultimate home wellness experience

The RX LED underwater lights are energy efficient, high-quality, suitable for any type of residential swimming pool, easy to install and for a friendly price. Control the lighting from inside of the pool using Piezo buttons, or use a touch screen panel near the pool to control the light intensity (and light colour). It's easy to create your own ultimate home wellness experience!



“Change light colour or scenes with Piezo buttons from inside the pool or with a touch screen panel.”



Eveye

UNDERWATER CAMERA

The Eveye underwater camera gives a crystal-clear image below the water. You can view it in real-time on your tablet or smartphone. The Eveye underwater camera can serve as an extra pair of watchful eyes, so you can relax and enjoy yourself. An additional safety element for your swimming pool experience. It goes without saying that the Eveye is not intended to replace personal supervision at the pool.

Safe and fun

The Eveye also offers a great additional fun factor in your pool. Watch real-time underwater images and store them on the hard disc of the HD recorder. While the children show off their best underwater tricks, you take great snapshots and video clips that you can easily send to your tablet or smartphone. The camera is compact and fits in a standard EVA underwater lighting installation housing.

The Eveye is *not* a drowning detection system, but it is a practical device that can be used as an extra pair of eyes in the pool.

**“Create a wonderful
ambiance on your
terrace and in
the garden.”**



EVA LED ABOVE WATER AMBIENT LIGHTING

That unique feeling of freedom and happiness when floating around in your own swimming pool, such luxury! So why not add EVA's enchanting lighting; not just under water, but also above. Create a wonderful ambiance on your terrace and in the garden. Control the atmospheric lighting from a central location, perfectly in sync with your underwater lighting. An incredible experience!

Alluring light display

All of EVA's ambient lights are available in daylight white (6500K), warm white (3000K) or RGBW (with daylight white or warm white). Our downlights, spotlights and pendants were specially designed for the demanding swimming pool environment. All lighting systems work together flawlessly. Synchronise all lamps or divide them into groups, adjust the light intensity, or choose the most beautiful colours from the extensive palette. Easily and intuitively operable with the touchscreen panel, and via your tablet or smartphone.





Control of the *EVA EXPERIENCE*

How do you put together your swimming pool experience? Do you opt for one element, for example only the EVA underwater lighting? Or are you going for the complete EVAstream experience, lighting controlled from the pool and an EVeYe underwater camera for extra safety?

Control; from basic to extensive

There are many options for controlling our products. A simple on / off switch, a basic touch screen panel, or centralized control of various elements via an extensive DMX touch screen panel, combined with an app for tablet or smartphone. Or do you choose to control EVAstream and underwater lighting from

inside the pool, with the waterproof Piezo buttons, available in various configurations. The choice is yours!

Everything works together

Do you opt for central control? We then link all elements (with the exception of the camera) together via DMX. With the DMX controller you can not only control the underwater lighting, but also RGBW downlights and spotlights. Fully synchronized. Select exactly the right colour tone from the palette, dim smoothly and play your own tailor-made colour scenes. Even connecting with the EVAstream and an extensive swim training program are possible!

Control from inside of the pool *WITH PIEZO BUTTONS*

You can easily operate the EVAstream from inside of the pool with Piezo buttons. Choose a preset swim workout or swim at a fixed speed. Increase the swimming speed or opt for a slower pace.

You can also operate the underwater lighting with the Piezo buttons. Opt for automatic synchronization of the light colours during a swim workout. Or adjust the light colour and intensity to your wishes. Easy and without leaving the pool, you are in complete control!



Piezo3 controller

**“You don’t have
to leave the pool
to start a new
swim work-out”**



“We deliberately don’t look at what’s already on the market. Because letting go of conventional design frameworks, creates room for new possibilities”

Innovation & Production

IN-HOUSE

All EVA Optic products are developed in our own facilities in Zwartsluis (the Netherlands); from idea to design to production. This has many advantages, for example with regard to quality control. We are very critical of quality. After all, the product must provide years of carefree user enjoyment.

All in-house; from idea to production

We develop our products from the perspective of the user and are not held back by “how it is always done” in the market. We constantly immerse ourselves in new techniques (and explore the limits of what is possible). To then integrate it into our production methods. A good example of this is 3D printing, a technique that offers us fantastic creative possibilities for product design, prototyping and even production.

High-end production facilities

Our focus on superior product quality and durability has resulted in a highly advanced production department. We strive for complete control of every part of the production process. We have our own Pick & Place department, which is truly unique. Here we produce our LED printed circuit boards and electronic components. These are then checked down to the component level in the X-Ray machine. For extreme accuracy. Everything to deliver the very best quality products to our customers.

Plan your pool project

From inventory and inspiration to creation. The following tips will help you get the most out of your pool project.

Phase 1: Inventory

NEW-BUILD

On the next pages, we'll help you to make an inventory and plan your new swimming pool project. We have a list of questions for you to ask yourself, and offer tips so that you'll be well-prepared. The first step is making an inventory, not just of your wishes and the situation but also of available (new) options.

“The first step is making an inventory, not just of your wishes and situation but also of all available (new) options.”

Some questions you can ASK YOURSELF ABOUT...

...how you want to use your swimming pool:

- Who will be using the pool?
- For which activities will the pool be used?
- What pool size would you need for that?
- Would you like to use the pool all year round?
- What other wishes/requirements do you have? Terrace, barbecue, outdoor kitchen, whirlpool, sauna, storage space for water toys? These aspects need to be taken into account when considering the available space!

...the building and location of the swimming pool:

- Will it be an indoor/covered pool or not?
- How much space do you have available?
- In what type of soil will the pool be built?
- Where will the installations be housed (pump, filter, heating)?
- Do you need a building permit?
- Are there any local environmental regulations that may be restrictive?
- Will you be adding a terrace? In the open air, covered, or both (e.g., a slatted or sliding roof)?
- Where does the sun come up and go down?
- What is the prevailing wind direction? Will this affect the ideal location?
- Be sure to consider your privacy.
- And last but not least, what is your budget?

Environmentally FRIENDLY

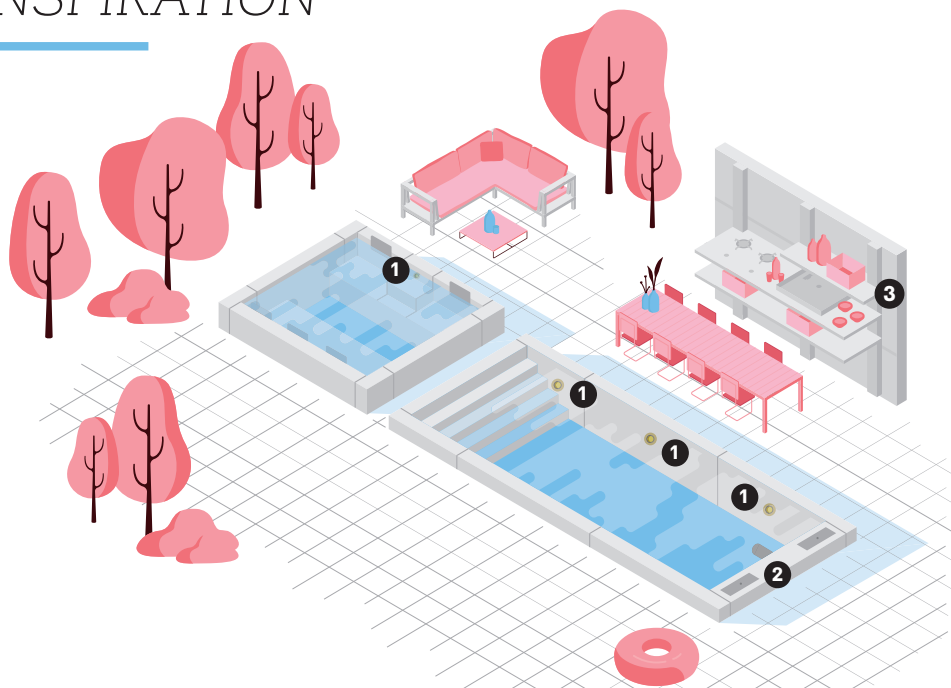
As great fans of nature, we do everything we can to minimize the impact on the environment with the EVA products. For example, our LED underwater lighting consumes less than 10% of the energy of a halogen lamp with comparable light output. And thanks to the EVAstream you can also swim and train in a much smaller pool. A huge saving of water, heating, filtering and chlorine, among others. And there are many more beautiful eco-friendly options that you can use when building your own pool...

Eco-friendly OPTIONS

- 1 Choose the correct pool size. Often a larger swimming pool is chosen to be able to swim “laps”. But to really swim you would need a good sized pool. With the EVAstream you can now also swim and even train in a small pool. With a smaller pool you use much less energy and water. Better for the environment and better for your finances.
- 2 Start with the basics! The easiest way to save energy is to insulate the pool perfectly. With a sufficiently thick insulation layer you prevent unnecessary heat loss. Combine this with a good quality pool cover and the heat is optimally retained. With a smaller, well-insulated swimming pool you can also extend the swimming season considerably.
- 3 Turn the thermostat back a little. Every degree of temperature increase of the swimming pool water corresponds to an increase of 15-18% energy consumption and operating costs.
- 4 Use solar heating to keep your pool water at the right temperature. There are many possibilities, compare and choose what suits you!
- 5 Environmentally friendly filters. For example, choose a glass filter medium. This is not only more durable than regular sand filter systems, but it also limits the formation of harmful disinfection by-products. Less chlorine is needed and there is less loss of rinse water. If you really want to be completely free of chemicals, choose a natural filtration system. Part of the swimming pool then consists of plants. The swimming pool is therefore completely self-cleaning without the use of chemicals.

Phase 2:

INSPIRATION



Renovation pool

REPLACING HALOGEN WITH R6 RGB

This example shows an existing pool with halogen lighting. The owner wanted to have multicoloured underwater lighting. But this was technically difficult, because only a standard 2-wire power cable is available, which could not be replaced. Especially for these situations, when replacement of the existing 2-wire power cable is impossible, we have developed the EVA R6 RGB lamp. Different light colours plus some colour change scenes, but without the extensive possibilities of a DMX installation.

With the R6 RGB underwater lights and the EVAstream (surface-mounted version) you can create a beautiful experience of multi-coloured lighting and sports in your existing swimming pool, without constructional work. Naturally, other elements can also be added to the experience.

- 1 R6 RGB underwater light (multi-coloured light over a 2-wire power cable, no DMX)
- 2 EVAstream (surface mounted)
- 3 Basic touch screen DMX controller

New-build or existing swimming pools

CONTROL FROM THE POOL

This example concerns a new build or existing swimming pool. The owner wants a great pool experience. Focused on sports and exercise, but also wellness and relaxation. With the ease of operation from the pool.

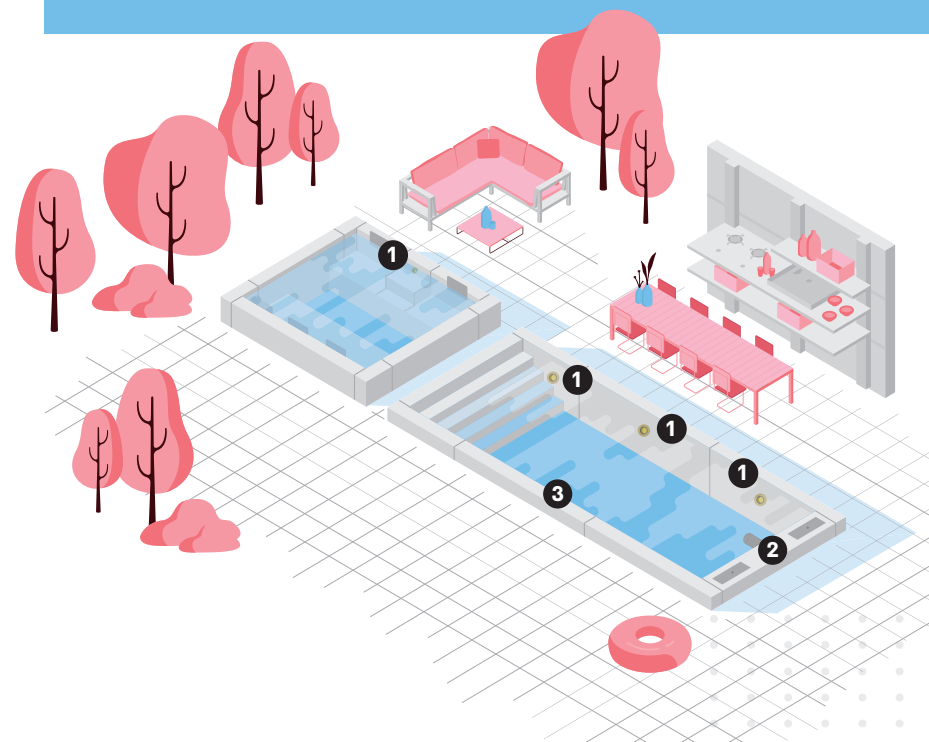
The EVAstream is installed as a surface mounted version for flexible use. For “swimming laps” and swimming training, or as rapids for the children. Or opt for an EVAstream completely recessed into the wall. This is already possible in small pools from 4.5m in length.

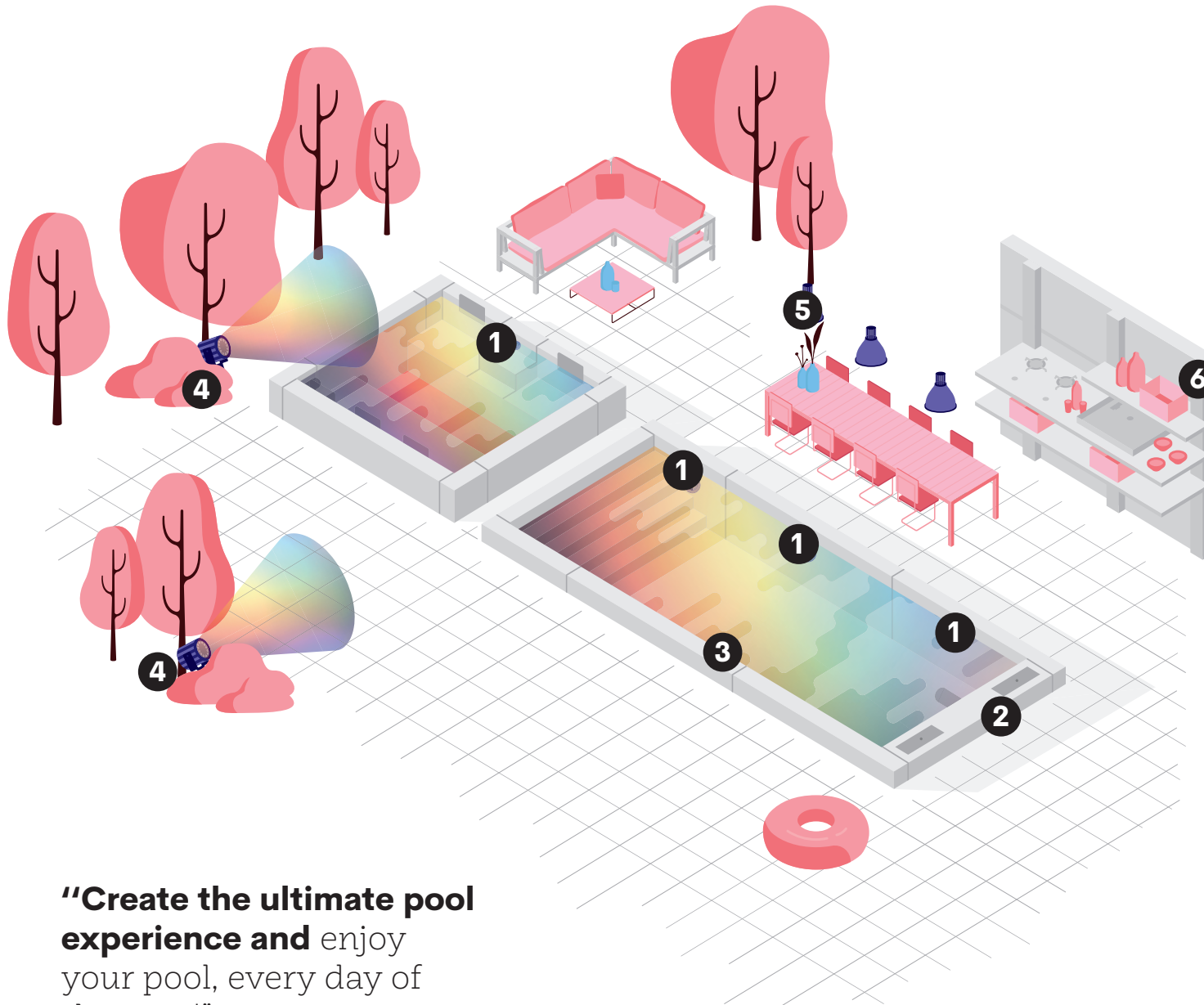
The RX Smart underwater lights automatically change colour during training. Or

select your favourite light colour or scene. For operation you use the Piezo3 controller with Piezo buttons in the pool. You don't have to get out of the water to start a new swim workout or change the light colour and intensity to your liking.

Of course, extra elements can also be added to the experience. Consider, for example, an EYeye underwater camera. Not only for extra safety, but also to analyze your own swimming technique ...

- 1 RX Smart underwater light (RGBW)
- 2 EVAstream (recessed or surface mounted)
- 3 Piezo3 control in the pool





“Create the ultimate pool experience and enjoy your pool, every day of the year!”

Newly built pool

CREATING THE ULTIMATE SWIMMING POOL EXPERIENCE

This example concerns a newly built swimming pool. The goal is to create a total experience of lighting, sports and relaxation. A complete colour metamorphosis of pool, terrace and garden. Simply, at the touch of a button.

Are you going for the complete experience? Then the multi-coloured lighting under and above water is centrally controlled via the universal DMX protocol. All elements work together seamlessly, reinforcing each other to create the perfect atmosphere.

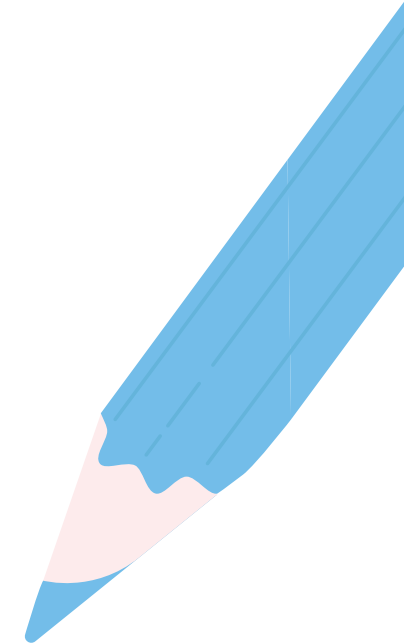
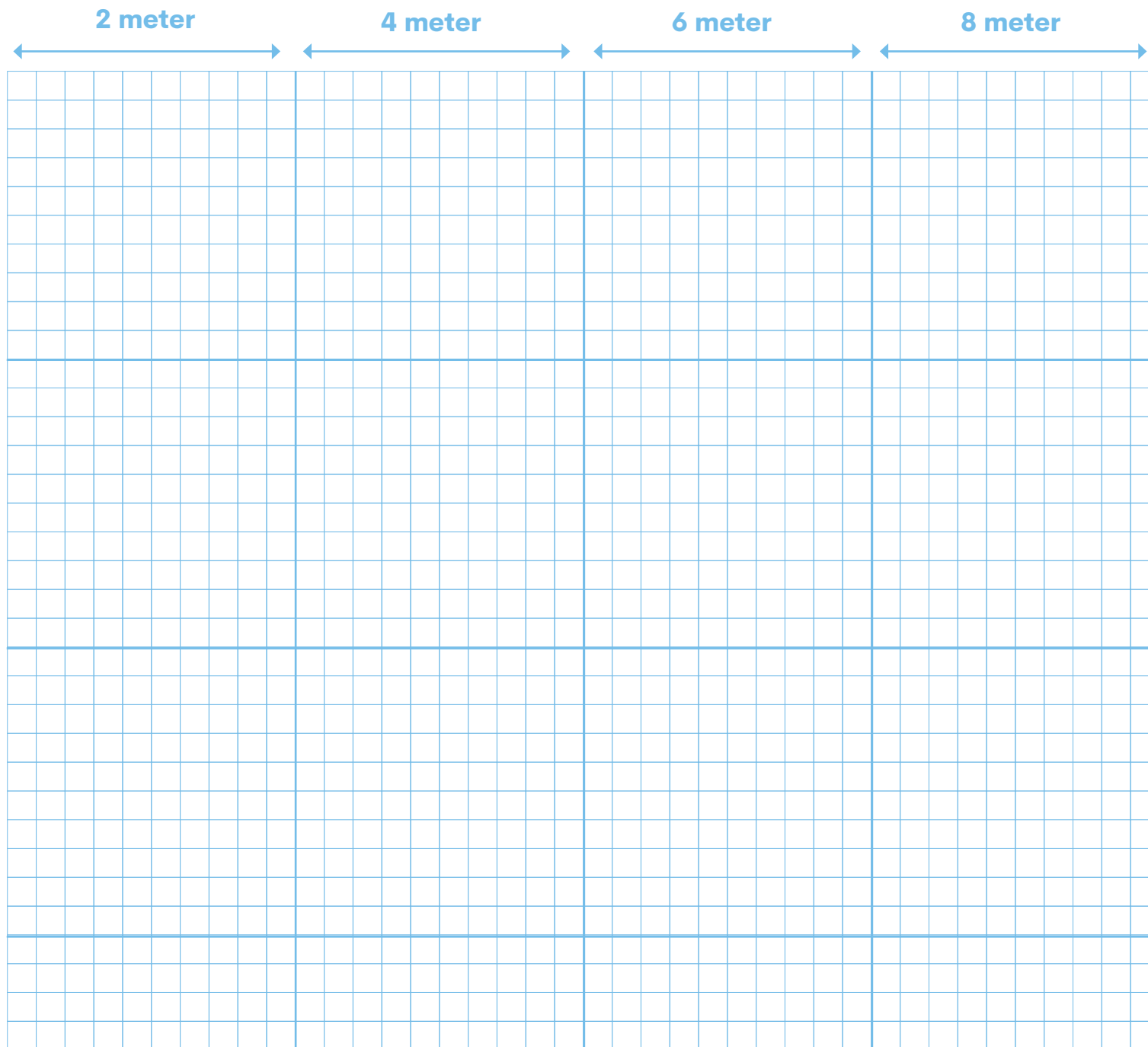
Enjoy not only your own favourite colours and beautiful colour changing scenes, under and above water, but also the extensive swim training programs for the EVAstream (recessed in the pool wall). Combine all elements to create the ultimate pool experience at home, and enjoy it all year round!

- ❶ RX Smart underwater light (RGBW)
- ❷ EVAstream (recessed)
- ❸ EVeye underwater camera
- ❹ Hydra spotlights RGBW
- ❺ Pendra lighting fixture RGBW
- ❻ DMX controller Advanced

EVA

**“Combine all of EVA’s
elements to create the
ultimate swimming pool
experience at home, all
year round!”**





Phase 3: *CREATION*

Some practical tips:

→ It's best to place the underwater lighting on the terrace side of the pool. This will prevent you from looking directly into the lights from the terrace.

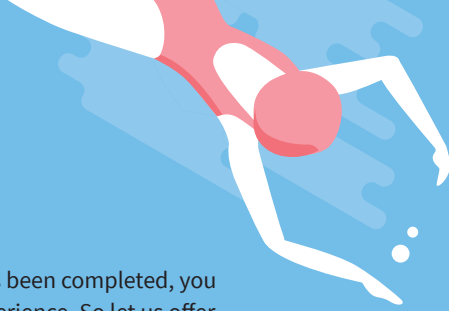
→ You need to be aware that the choice for the material used to line the swimming pool (tiles, polyester, etc.) will affect how you experience the colour(s) of the underwater lighting. For example, dark tiles absorb a lot of the luminaire's light.

→ Accessories are available for recessed and surface mounting of underwater lights and EVAstream. Also in luxury design polymers in anthracite and white. There are also cover plates for replacing all types of underwater lighting. Accessories for the A-series, RX-series and the EVeys are interchangeable.

Phase 4: EXPERIENCE

When the construction of your swimming pool has been completed, you undoubtedly want to get the most out of your experience. So let us offer a few final tips for health, exercise and wellness:

- 1 Swimming is one of the few sports that gives you an energy boost immediately after the activity.
- 2 With an intensive swim training, you can burn 500-750 kcal per hour.
- 3 Swimming improves your sleeping pattern. You will fall asleep faster and the quality of your sleep improves.
- 4 Swimming is a real, full-body workout. The resistance created by the water ensures that swimming becomes strength training for the entire body.
- 5 Swimming is a low-impact sport. It creates no strain on the joints, tendons, and muscles. Swimming is a sport with a very low risk of injury.
- 6 Swimming strengthens your lung capacity and is often recommended to people suffering from asthma.
- 7 Swimming reduces stress levels in your body and also ensures that you'll be better able to cope with stress.
- 8 Swimming reduces pain associated with diseases such as MS and rheumatism, and it increases mobility.
- 9 Swimming improves blood circulation, lowers blood pressure, and strengthens blood vessels.
- 10 Swimming improves your mood because it stimulates the production of the happiness hormone serotonin.
- 11 Swimming can be done by everyone; young and old, beginners and top athletes, and everyone in between.



Colour therapy AT HOME

Colour therapy is used to balance body and mind. Now you can try it yourself in your own swimming pool with EVA's multicoloured underwater lighting:



Red

Stimulating and vitalising
Good for the heart and lungs, improves circulation, anti-depressant



Orange

Uplifting, energising, and warming
Strengthens the immune system and improves digestion



Yellow

Activating and joyful
Strengthens the immune system, improves mental performance



Green

Healing and relaxing
Relieves stress and tension headaches, helps fight flu & viruses



Turquoise

Enlightening and harmonising
Calming for the skin and organs, stress-reducing



Light blue

Cooling and relaxing
Reduces inflammations and is antiseptic, lowers blood pressure



Deep blue

Calming and relaxing
Antibacterial, improves sleep and learning capacity



Purple

Cleansing and uplifting
Strengthens the nervous system and brain, helps against fatigue



Pink

Rejuvenating and warming
Strengthens positive emotions and compassion, cleanses the skin

What experience are you looking for?

With EVA Optic products, you'll enjoy your own swimming pool (again), all year round. We are here to help you create your ideal swimming pool experience at home!



EVA

EVA Optic B.V.

De Velde 1

8064PH Zwartsluis

The Netherlands

+31 (0)38 33 75 067

sales@evaoptic.com

www.evaoptic.nl