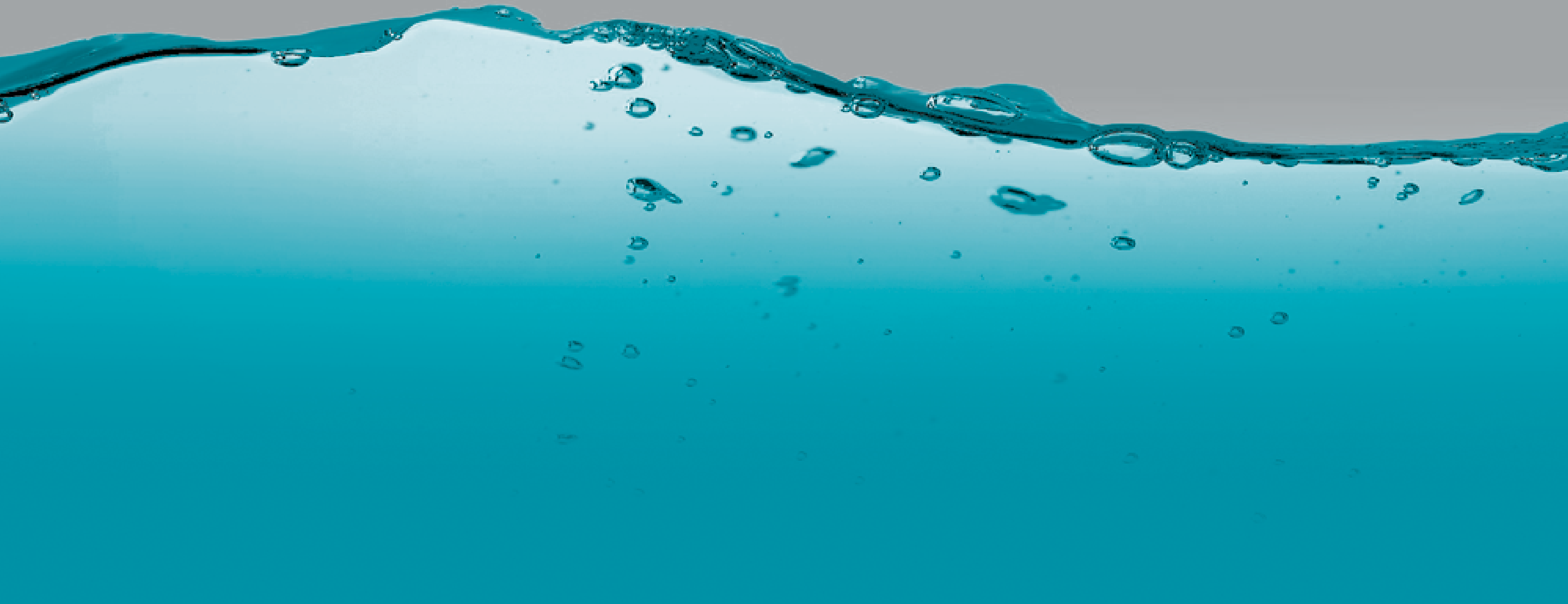


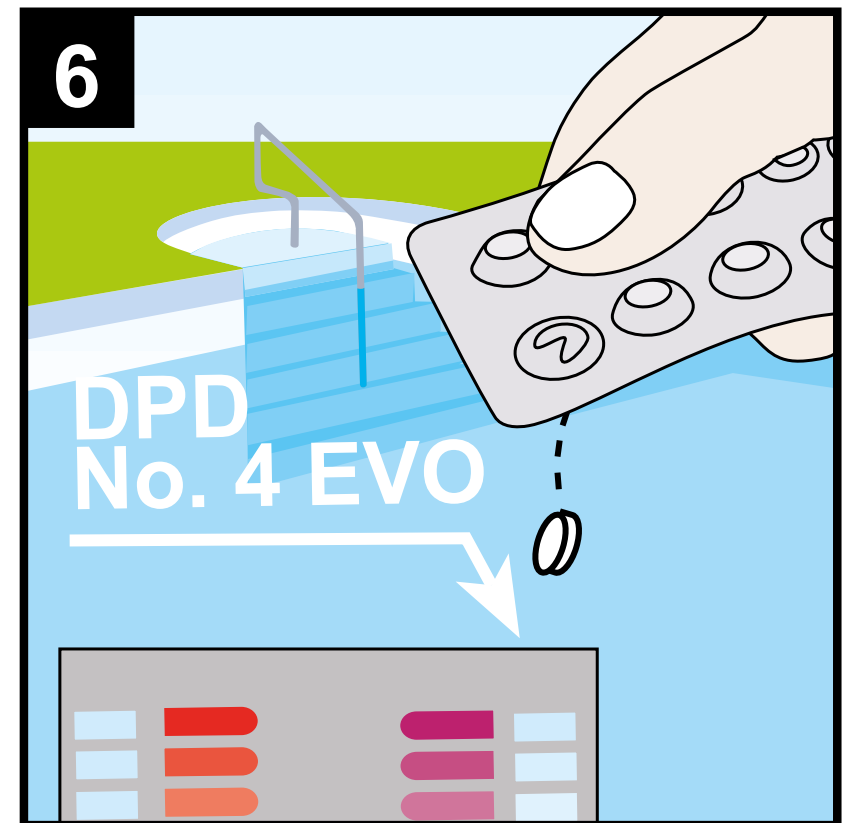
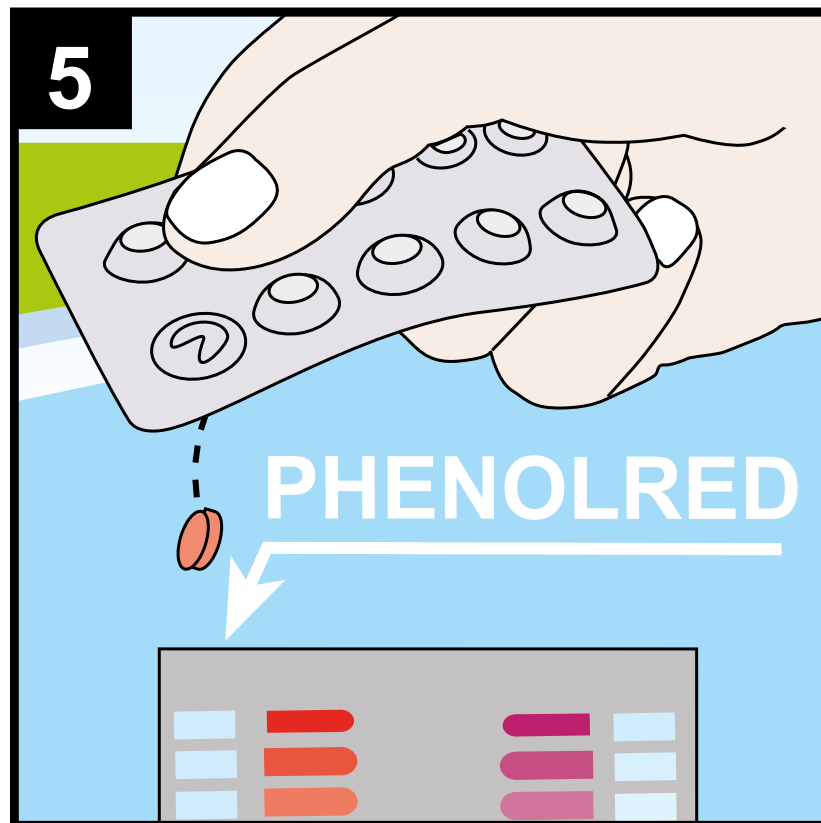
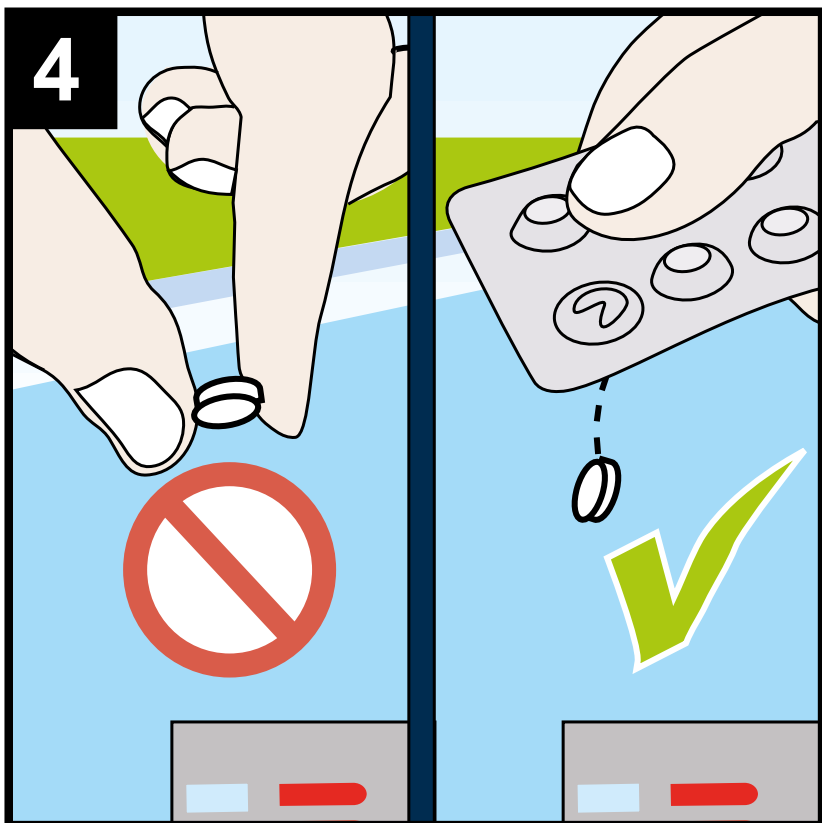
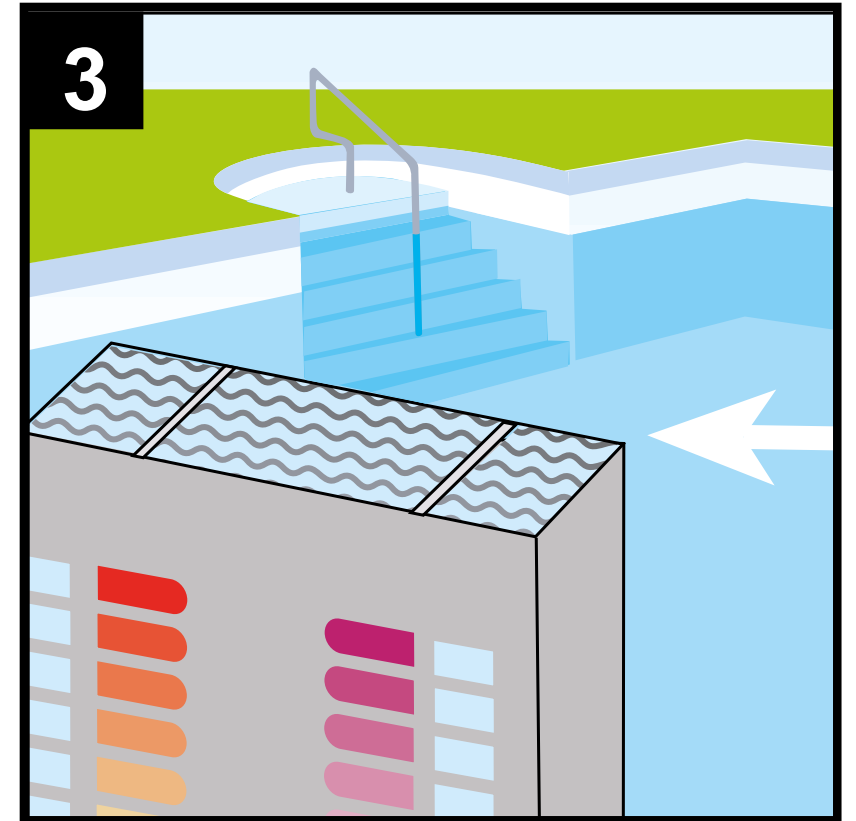
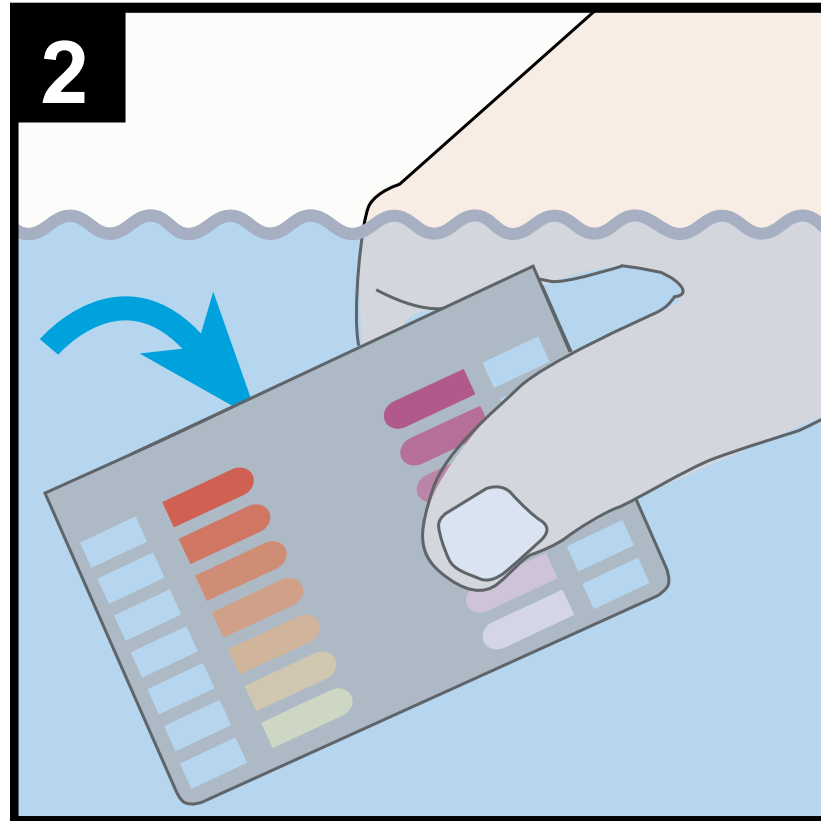
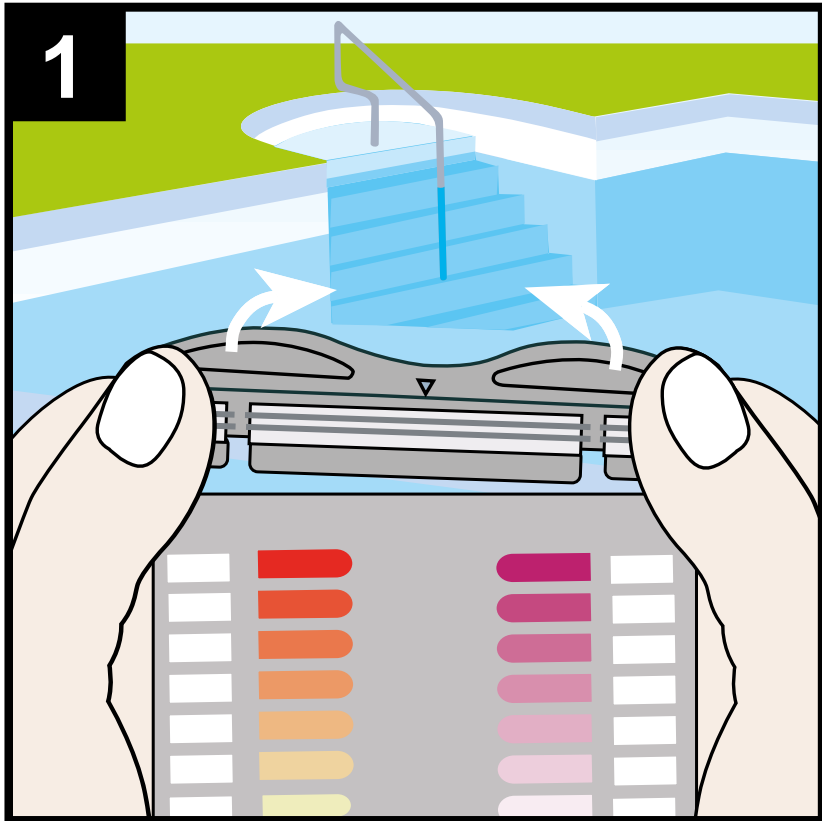
pH/O₂

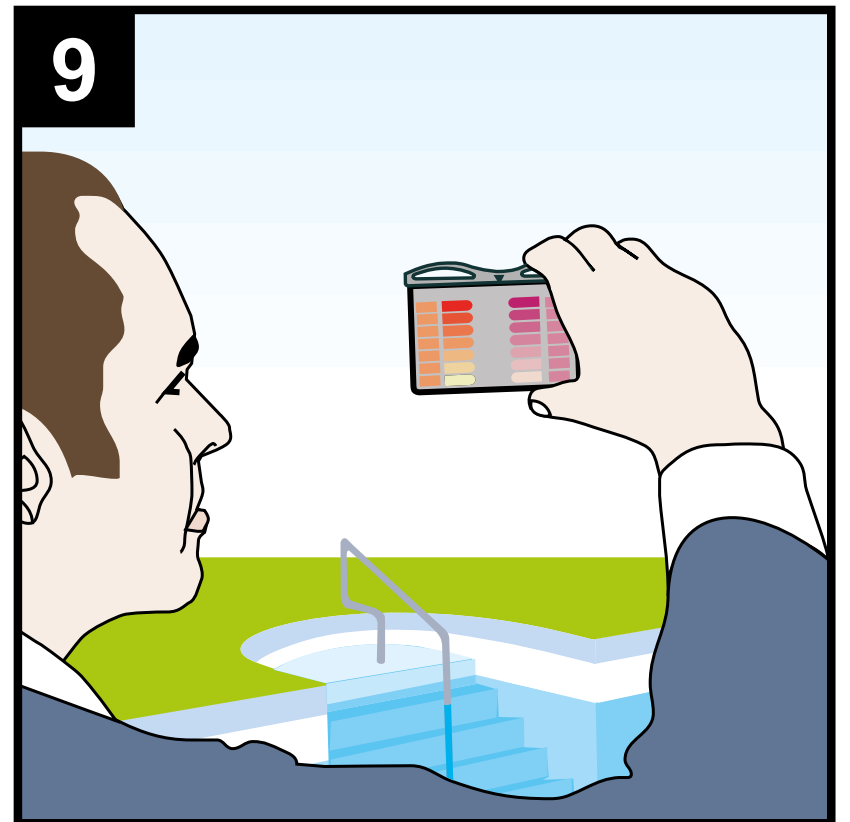
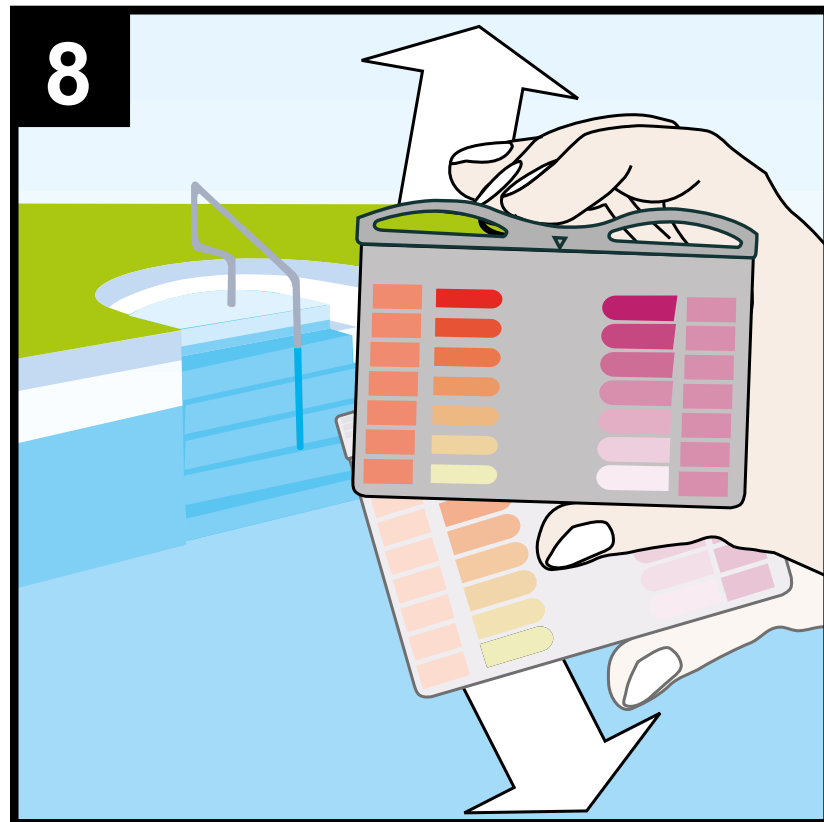
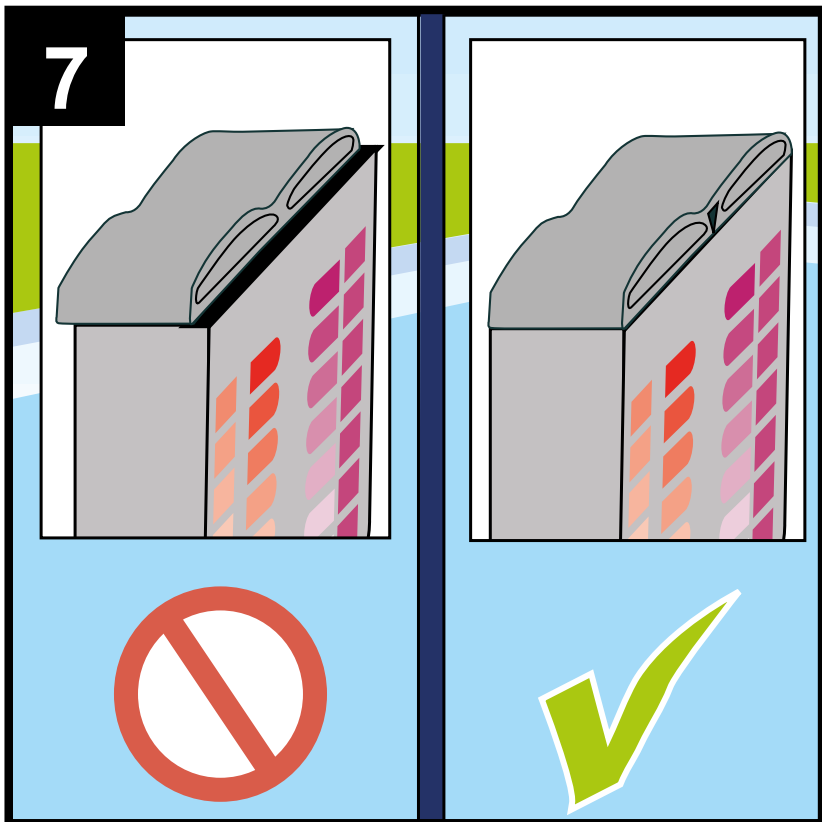
Pooltester



BAYROL

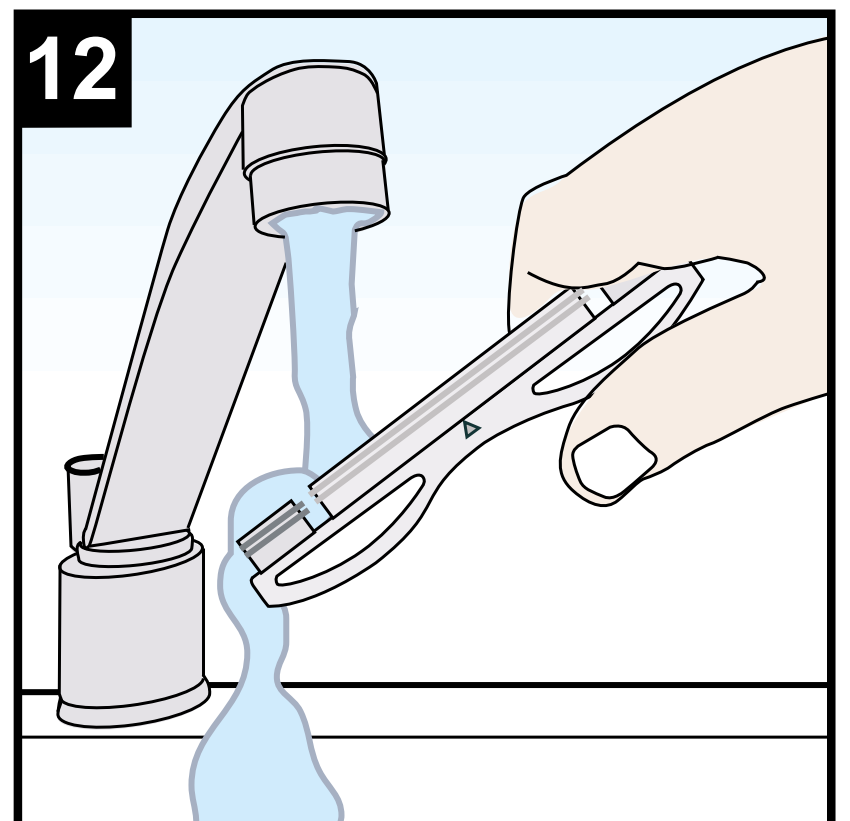
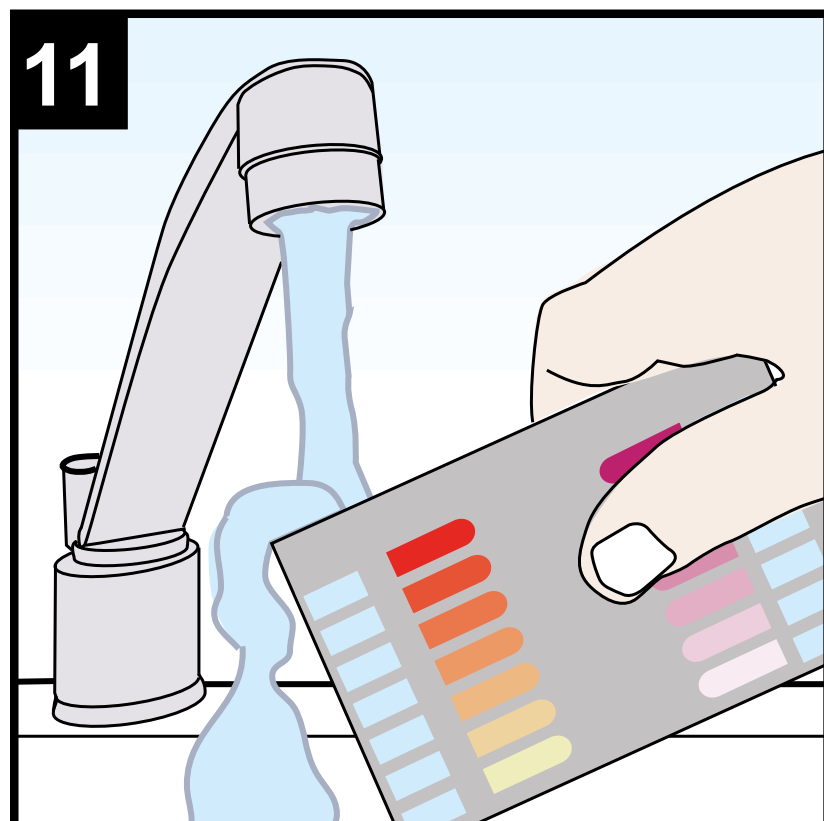
your pool & spa water expert





10

pH		O ₂ mg/l	
8.2			10.0
7.8		ok	8.0
7.6		ok	6.0
7.4	ok	ok	4.5
7.2	ok	ok	3.0
7.0	ok		1.5
6.8			0.0





Bedienungsanleitung

Wichtige Hinweise

- Der Gehalt an O₂ sollte 1–2 Stunden nach Zugabe des Pflegeproduktes mindestens 8 mg/L betragen. Zu einem späteren Zeitpunkt ist eine korrekte Messung nicht möglich, da der Sauerstoffgehalt dann nicht mehr nachweisbar ist.
- pH-Werte unter 6,8 ergeben immer eine Gelbfärbung.
- pH-Werte über 8,2 ergeben immer eine Rotfärbung.
- Bei sehr weichen Wässern sind Fehlmessungen möglich.

Achtung

- Reagenztabletten sind ausschließlich für die chemische Analyse bestimmt und dürfen nicht für andere Zwecke verwendet werden.
- Reagenztabletten dürfen nicht in die Hände von Kindern gelangen.



Mode d'emploi

Remarques importantes

- La teneur en O_2 devrait être au moins de 8 mg/L 1 – 2 heures après l'addition du produit d'entretien. Une mesure correcte ne sera plus possible à un moment ultérieur, car la teneur en oxygène ne sera plus décelable.
- Les valeurs de pH inférieures à 6,8 se caractérisent toujours par une coloration jaune.
- Les valeurs de pH supérieures à 8,2 se caractérisent toujours par une coloration rouge.
- Des erreurs de mesure sont possibles pour les eaux très douces.

Attention

- Les pastilles de réactifs sont produites exclusivement pour l'analyse chimique; il est interdit de les utiliser pour d'autres objectifs.
- Maintenir impérativement les pastilles de réactifs hors de portée des enfants.



Istruzioni

Avvertenze importanti

- 1 – 2 ore dopo l'aggiunta del trattamento, il contenuto di O_2 deve essere pari ad almeno 8 mg/L. Non sarà successivamente possibile effettuare una misurazione corretta, poiché il contenuto di ossigeno non è più comprovabile.
- I valori pH al di sotto di 6,8 danno sempre una colorazione gialla.
- I valori pH al di sopra di 8,2 danno sempre una colorazione rossa.
- Con le acque di durezza molto ridotta si possono verificare misurazioni errate.

Attenzione

- Le pastiglie di reagente sono destinate ad essere utilizzate esclusivamente per l'analisi chimica e non possono essere impiegate per altri scopi.
- Le pastiglie di reagente non devono essere lasciate alla portata dei bambini.



Instruction Manual

Important

- The oxygen content should be at least 8 mg/L between 1 and 2 hours after the care product has been added. It is not possible to make an accurate measurement at a later time because it is then no longer possible to show the oxygen content.
- pH values below 6.8 also produce a yellow colouration, so a reading of 6.8 may be incorrect.
- pH values above 8.2 also produce a red colouration, so a reading of 8.2 may be incorrect.
- Incorrect measurements are possible where very soft water is involved.

Caution

- The reagent tablets are only to be used for chemical analysis.
- They must not be used for any other purpose.
- Keep out of reach of children.

BAYROL Deutschland GmbH

Robert-Koch-Straße 4 · D-82152 Planegg

Tel. +49 89 85701-0 · www.bayrol.de

Interbayrol GmbH c/o KD-Zug-Treuhand AG

Untermüli 7 · CH-6304 Zug

Tel. +41 41 7662650 · www.bayrol.com

BAYROL France S.A.S

Chemin des Hirondelles - BP52

F-69572 Dardilly Cedex

Tél. + 33 4 72 53 23 87 · www.bayrol.fr

BAYROL Ibérica SLU

Avda Diagonal 453 bis Planta Entresuelo

08036 Barcelona

Tel. +34 93 272 48 48 · www.bayrol.es



BAYROL

your pool & spa water expert